

Norman Virus Control v5 for OS/2

Viruses will appear in days to come, and businesses will unfortunately be victimized. Be prepared to meet these challenges in a professional way. Norman Virus Control v5 (NVC v5) is an anti-virus program that protects your workstations and servers against malicious software, also referred to as *malware*. The most prevalent types of malware are viruses, worms, and trojans. Previous versions of NVC have been awarded numerous international prizes. The new version is even better. In addition to a user-friendlier, more attractive and intuitive graphical interface, NVC v5 provides the functionality and flexibility that consolidates NVC's position as a state-of-the-art product in the battle against virus attacks.

The single most important task for an anti-virus application is to keep computers virus-free. NVC v5 detects both known and unknown viruses, including trojans and worms. In the new version Norman has managed to expand its renowned core technology; the scanning engine. When infected files are detected, NVC isolates or removes them immediately —before the destructive code is activated.

Why NVCv5 for OS/2?

NVCv5 for OS/2 is specially developed and designed to fit the needs of OS/2 users. Making it possible to configure and use it in an effective and intuitive way. Most Antivirus software for OS/2 is designed as for the Windows world and thereby has not been made user friendly for the OS/2 user.

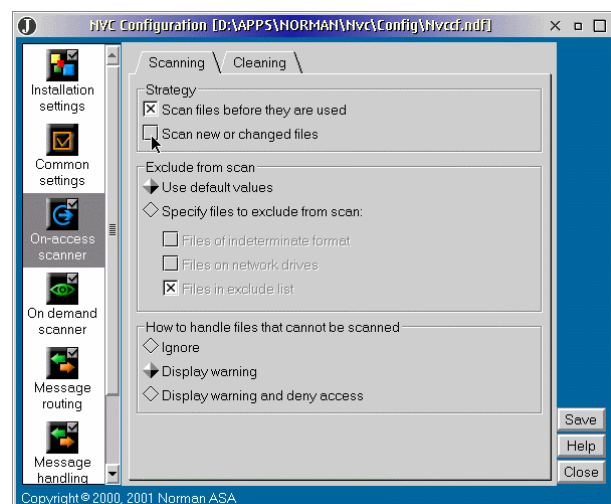
Integration

It integrates it self with the OS/2 and eCS WorkplaceShell in a way that makes it very effective and easy to use. For example if you right click on the C: drive icon on the desktop you can directly select scanning.

Scanning

There is two ways to scan for viruses, trojans, worms etc. One is the **on-access scanner**. On-access scanning involves constant monitoring of the file system on servers and workstations. For an

antivirus application, it's imperative to detect and block a virus before it's activated. Whenever a file is accessed in a read/write operation, or a program is executed, the On-access scanner is notified and scans the file on the fly. The other way is to use the **on-demand scanner**. This scanner is used for manual scans of selected areas on your machine. You can select entire drive(s), or certain folders and subfolders—even specific files for scanning.



Task editor

You can use the Task editor to create task files for scans that you wish to perform on a regular basis, or special scans that you intend to run in certain situations. For example, if you download files from the Internet to designated areas, you can create a task file that scans these areas only and run the task manually after downloads. In addition, you can schedule the task to run at a pre-selected time.

Administrators can create task files and distribute them to all workstations in the network to ensure consistent checking of areas that require special attention.

Utilities

NVC Utilities is a tool that presents an overview of the current state of affairs for the NVC components on your PC. In addition to viewing key information, you can change certain elements by selecting some of the entries, for example Task files. Other functions, like Components, provide information only and cannot be edited from the Utilities module.

Messages

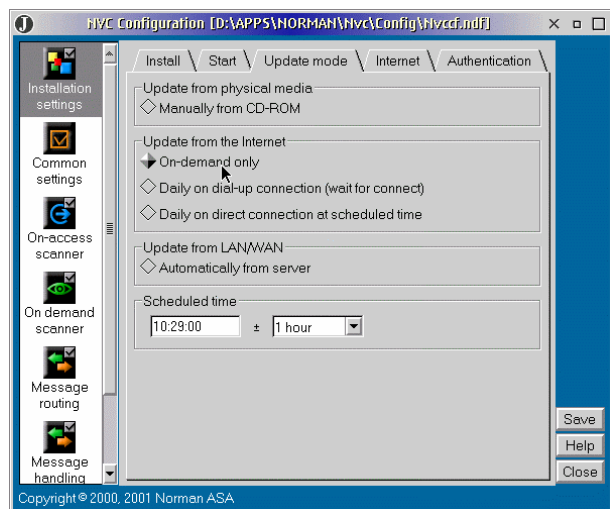
Messaging is made up from two components: Message routing and Message handling.

Message routing allows administrators to select what kind of messages that will be routed to other PCs running NVC in the network. Message handling allows users as well as administrators to select what kind of messages that are displayed or kept locally. The

messaging functionality is an effective way of keeping track of all activity related to NVC components locally as well as in the network.

Updating NVC

Norman Internet Update (NIU) is an integrated part of the product and can be configured to regularly check for new and updated files on Norman's product servers. Theoretically, the *entire* product can be available for downloading if the changes are extensive, while previous versions only updated the scanning engine. Equally important is the possibility of distributing the updated program immediately to all workstations in the network, and to all remote users upon their next connection to the company server.



System requirements:

OS/2 Warp 4, OS/2 Warp Server, Workspace On-demand, and eComStation. Java 1.1.8 is required for the Configuration editor, Task editor and Utilities modules.

